

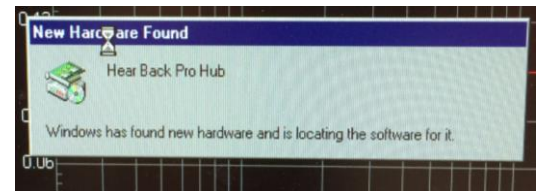
Hear Back Pro Hub Firmware Update

Procedure

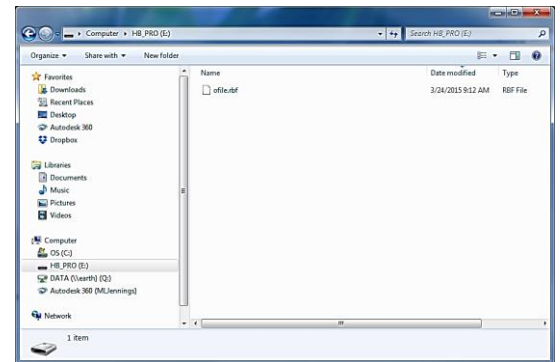
1. With Hub's front power switch in the on position, connect the Hub to a computer (PC or Mac) via USB. The USB connection on the Hub is near the HBUS output connection on the Main Card shown in the picture to the right with the label "PROGRAM" above it.



2. If using a Windows PC, a window should pop up to tell you that it found new hardware called "Hear Back Pro Hub". If using a Mac, you will see a new drive appear on your desktop titled "HB Pro".



3. Once your computer mounts the Hear Back Pro Hub as a disk drive, you will be able to open the new disk drive and view the files. On a PC, go to "My Computer" and you should see a new drive titled "HB Pro". On Mac, you will see this drive on your Desktop or by opening Finder.



4. The file titled "ofile.rbf" is the Hub's firmware file. To update the firmware, first rename the existing "ofile.rbf" to "ofile.old" and then drag the new "ofile.rbf" file into the "HB Pro" drive. Renaming the existing file first is a good idea just in case the new firmware file is corrupted, you can revert back to the old firmware by renaming it back to "ofile.rbf". Also, delete the file named "ofile.bak". This file is a backup of the last firmware that loaded successfully. If the "ofile.rbf" fails to load, it will revert to the backup copy. Since the firmware is being updated, it is necessary to remove this "ofile.bak" backup file. If for some reason it fails to boot, LED "B" or "C" will light up on the back of the hub. If this happens, try the steps above again.
5. The updated firmware file will not run until you reboot the Hub. To reboot, simply power off the Hub using the Hub's front power switch. Allow the Hub to stay off for at least 3 seconds. Not giving the Hub at least 3 seconds to power down can sometimes result in the PoE circuitry not initializing properly and some mixers may not power back on until another reboot is done. After at least 3 seconds of being off, power the Hub back on.

6. To ensure the Hub is using the new firmware, you can check the current firmware version (this applies to v1.3 and higher only). Power up the Hub and wait until all the LEDs light up (a few seconds after powering the Hub on). Slide the input switch to any different position (it does not matter the position as long as it is moved at least once while all the LEDs are illuminated during boot-up).



7. After a few seconds of all the LEDs being illuminated, all of the LEDs will turn off and first one channel LED will illuminate white to indicate the major version (the number before the decimal place in the version number) followed by another channel LED illuminated in white to indicate the minor version (the number after the decimal place in the version number). For example, in the photos to the right, first channel 1 illuminated white followed by channel 3 to indicate that the Hub is running version 1.3 firmware. Make sure you re-position the front panel switch to the correct input before using the system.

