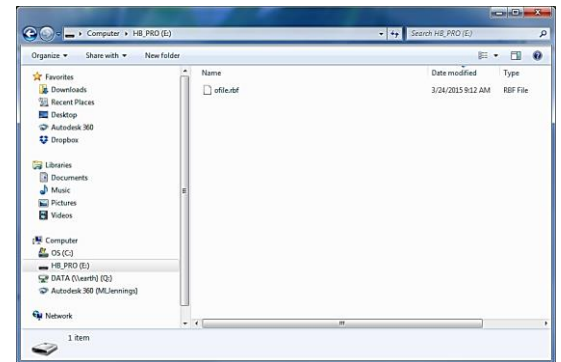


Bridge Firmware Update Procedure

1. With Bridge's front power switch in the on position, connect the Bridge to a computer (PC or Mac) via USB. The USB connection on the Bridge is near the HBUS output connection on the Main Card shown in the picture to the right with the label "PROGRAM" above it.



2. If using a Windows PC, a window should pop up to tell you that it found new hardware called "WSG Bridge". If using a Mac, you will see a new drive appear on your desktop titled "HB Pro".



3. Once your computer mounts the Bridge as a disk drive, you will be able to open the new disk drive and view the files. On a PC, go to "My Computer" and you should see a new drive titled "HB Pro". On Mac, you will see this drive on your Desktop or by opening Finder.
4. The file titled "ofile.rbf" is the Bridge's firmware file. To update the firmware, first rename the existing "ofile.rbf" to "ofile.old" and then drag the new "ofile.rbf" file into the "HB Pro" drive. Renaming the existing file first is a good idea just in case the new firmware file is corrupted, you can revert back to the old firmware by renaming it back to "ofile.rbf". Also, delete the file named "ofile.bak". This file is a backup of the last firmware that loaded successfully. If the "ofile.rbf" fails to load, it will revert to the backup copy. Since the firmware is being updated, it is necessary to remove this "ofile.bak" backup file. If for some reason it fails to boot, LED "B" or "C" will light up on the back of the Bridge. If this happens, try the steps above again.

5. The updated firmware file will not run until you reboot the Bridge. To reboot, simply power off the Bridge using the Bridge's front power switch. Allow the Bridge to stay off for at least 3 seconds. Not giving the Bridge at least 3 seconds to power down can sometimes result in the PoE circuitry not initializing properly and some mixers may not power back on until another reboot is done. After at least 3 seconds of being off, power the Bridge back on.

6. To ensure the Bridge is using the new firmware, you can check the current firmware version (this applies to v1.3 and higher only). Power up the Bridge and wait until all the LEDs light up (a few seconds after powering the Bridge on). Slide the input switch to any different position (it does not matter the position as long as it is moved at least once while all the LEDs are illuminated during boot-up).



7. After a few seconds of all the LEDs being illuminated, all of the LEDs will turn off and first one channel LED will illuminate white to indicate the major version (the number before the decimal place in the version number) followed by another channel LED illuminated in white to indicate the minor version (the number after the decimal place in the version number). For example, in the photos to the right, first channel 1 illuminated white followed by channel 3 to indicate that the Bridge is running version 1.3 firmware. Make sure you re-position the front panel switch to the correct input before using the system.

